

# Edimax Broadband Router (Wired/Wireless)

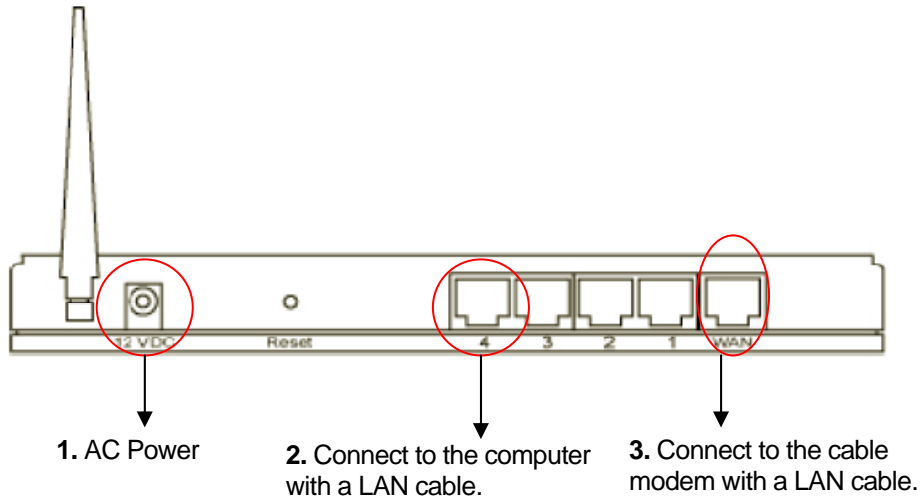
## Quick Installation Guide

### Step 1:

1. Power-off the Cable Modem.

### Step 2: Connect the cable.

1. Power On the router.
2. Connect the computer with a LAN cable to the LAN port.
3. Connect the cable Modem into the WAN port with a LAN cable.



### Step 3: Front Panel LED Light



Please ensure you have the following LED light:

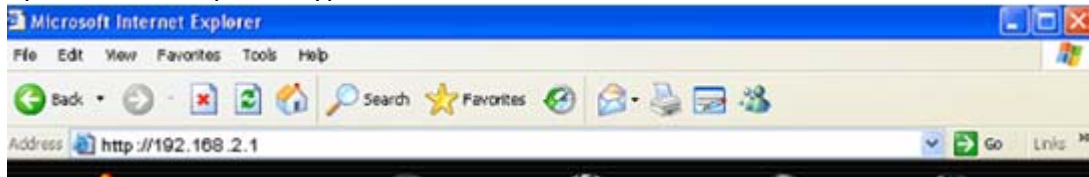
- PWR: Firm light**
- WLAN: Flashing (only for wireless router)**
- WAN 10/100m: Flashing**
- WAN LINK/ACT: Firm / Flashing**
- LAN 4: Firm / Flashing**

### Step 4: Power on the cable modem

1. Power on the cable modem. Wait for few seconds.
2. Internet will be connected once the cable modem comes back on.
3. Open Internet Explorer to access to the internet. If you can't access to the internet, please proceed to Step 5.

## Step 5: Run Quick Setup

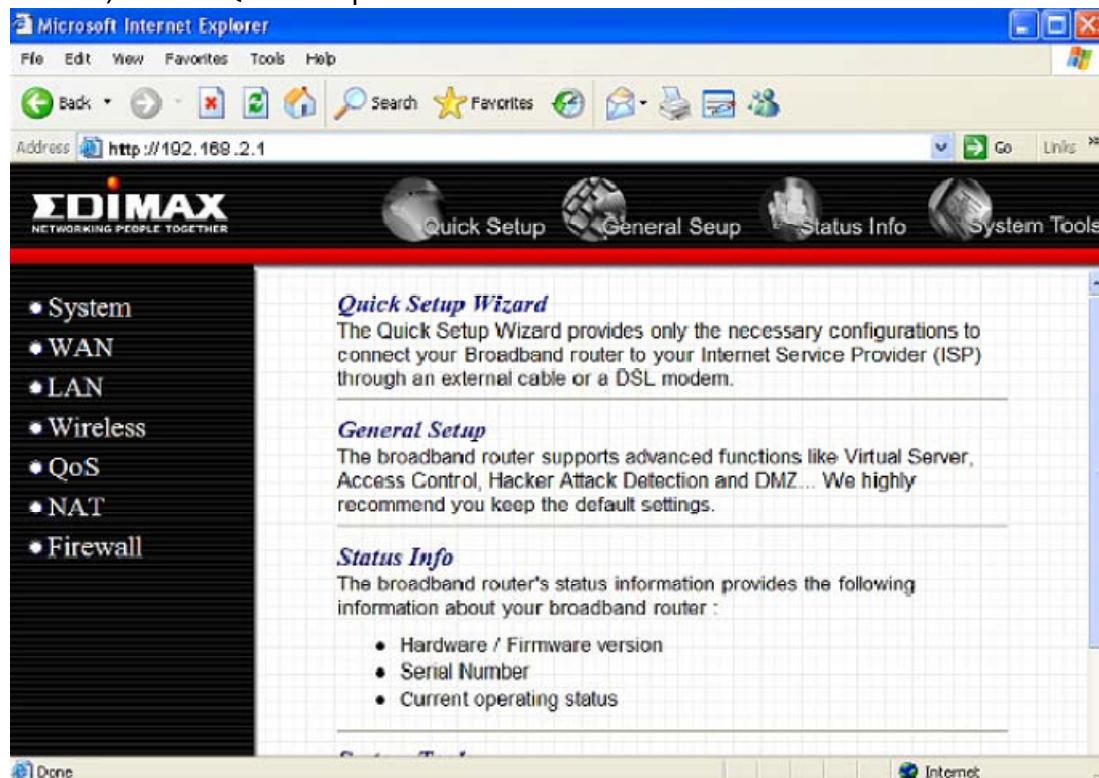
1. Open internet explorer, type 192.168.2.1 at the address bar. Press Enter.



2. When it prompts you to login with username and password, enter Username as admin and Password is 1234. Click OK.



3. Then, click on Quick Setup Wizard.



4. Select Time Zone and click [Next](#).

The screenshot shows the Edimax Quick Setup interface. At the top, there are navigation tabs: Quick Setup (selected), General Setup, Status Info, and System. On the left, a sidebar lists the setup steps: 1. Time Zone (checked), 2. Broadband Type, and 3. IP Address Info. The main content area is titled "1. Time Zone" and contains the following text: "Set the time zone of the Broadband router. This information is used for log entries and firewall settings." Below this text is a form with the following fields: "Set Time Zone" (a dropdown menu showing "(GMT)Greenwich Mean Time: Dublin, Edinburgh, Lisbon, London"), "Time Server Address" (a text input field containing "192.43.244.18"), and "Daylight Savings" (a checkbox labeled "Enable Function" which is unchecked, followed by "Times From" and "To" dropdown menus both set to "January" and "1"). A "Next" button is located at the bottom right of the form.

5. Select Cable Modem and click Next.

The screenshot shows the Edimax Quick Setup interface. At the top, there are navigation tabs: Quick Setup (selected), General Setup, Status Info, and System. On the left, a sidebar lists the setup steps: 1. Time Zone, 2. Broadband Type (checked), and 3. IP Address Info. The main content area is titled "2. Broadband Type" and contains the following text: "Specify the WAN connection type required by your Internet Service Provider. Specify a Cable modem, Fixed-IP xDSL, PPPoE xDSL, or PPTP xDSL connection." Below this text are three radio button options: "Cable Modem", "Fixed-IP xDSL", and "PPPoE xDSL". The "Cable Modem" option is selected. Below the "Cable Modem" option, there is a paragraph of text: "A connection through a cable modem requires minimal configuration. When you set up an account with your Cable provider, the Cable provider and your Broadband router will automatically establish a connection, so you probably do not need to enter anything more." Below the "Fixed-IP xDSL" option, there is a paragraph of text: "Some xDSL Internet Service Providers may assign a Fixed IP Address for your Broadband router. If you have been provided with this information, choose this option and enter the assigned IP Address, Subnet Mask, Gateway IP Address and DNS IP Address for your Broadband router." Below the "PPPoE xDSL" option, there is a paragraph of text: "Some xDSL Internet Service Providers may assign a Fixed IP Address for your Broadband router. If you have been provided with this information, choose this option and enter the assigned IP Address, Subnet Mask, Gateway IP Address and DNS IP Address for your Broadband router."

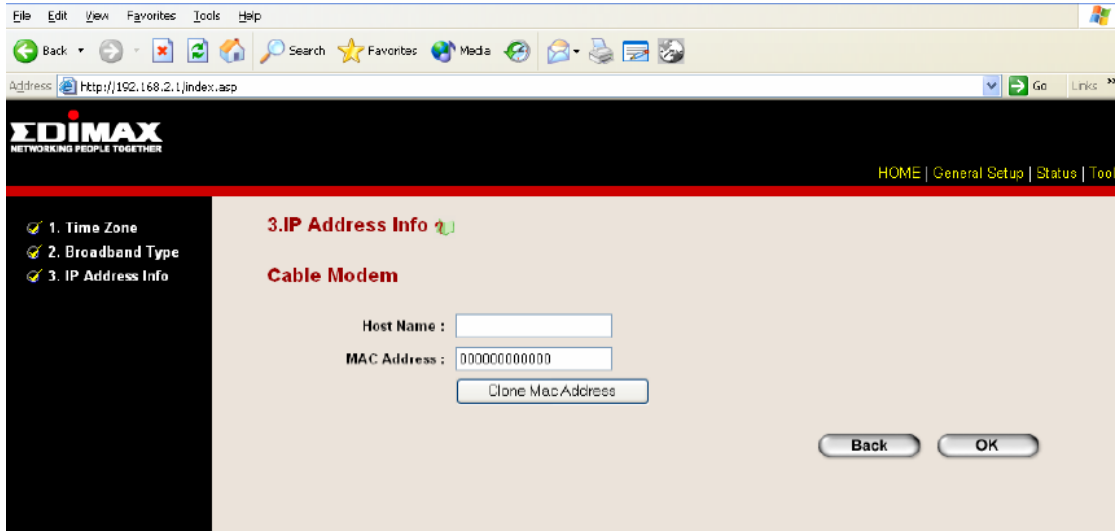
6.

A) For ISP (NTL/Telewest/Blueyonder):

In the Host Name, leave it blank. Click on Clone Mac Address. Then click OK.

B) For ISP (Virgin):

In the Host Name, leave it blank. MAC Address leaves it as 000000000000. Then click OK.



7. Wait for 10-20 seconds to let the router saves your setting.

8. Then check the internet status, click on Status>Internet Connection.

- Obtain IP Protocol>Dynamic IP Connect → The internet will be connected.