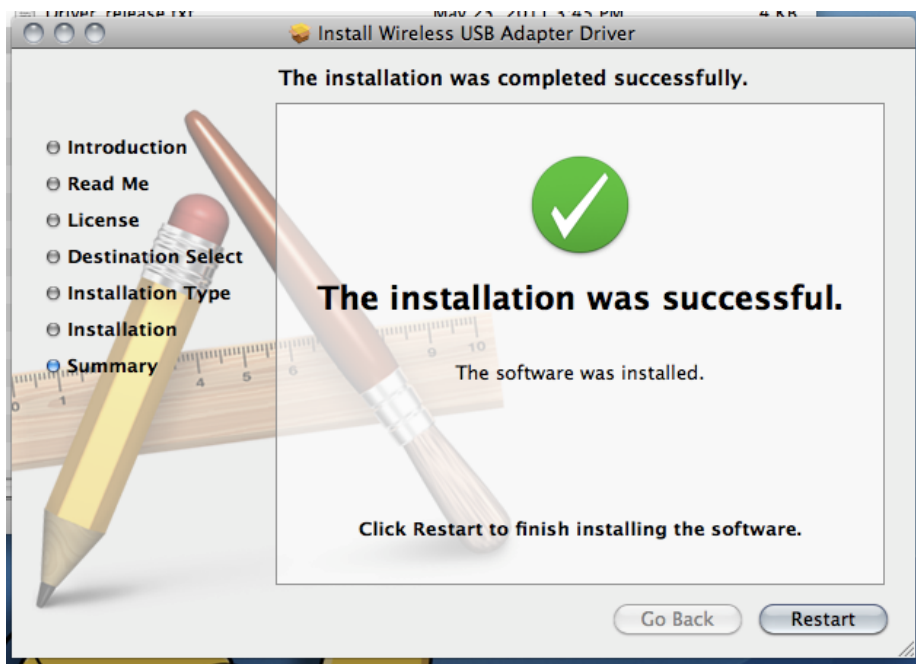
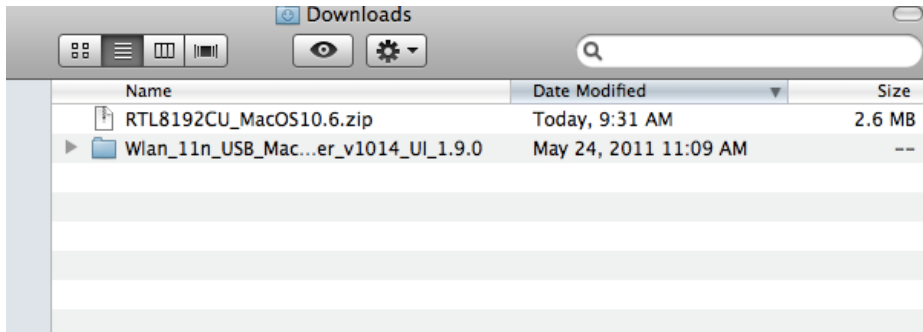


Edimax Wireless USB Adapter 11g & 11n

Quick Installation Guide Mac OS

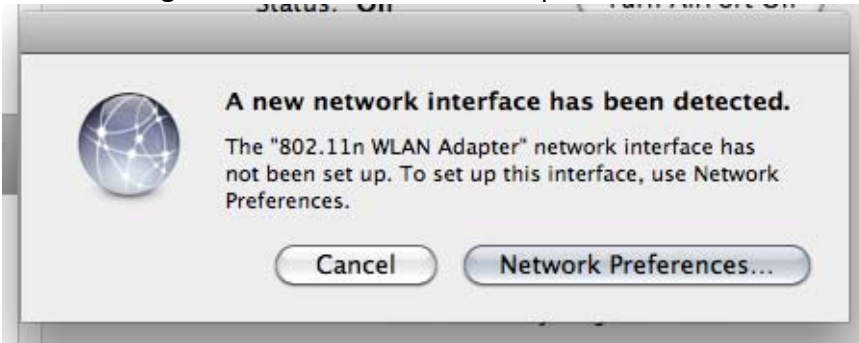
A) Install the driver and Connect to your Wireless Network

1. Install the driver into your Mac using the CD or download the latest Mac driver from Edimax Website. Go to www.edimax.co.uk > Support > Select the model number and click Go. The driver you download is a zip file. Open the zip file, you will see the driver file. Double-click on the driver file to install the driver.

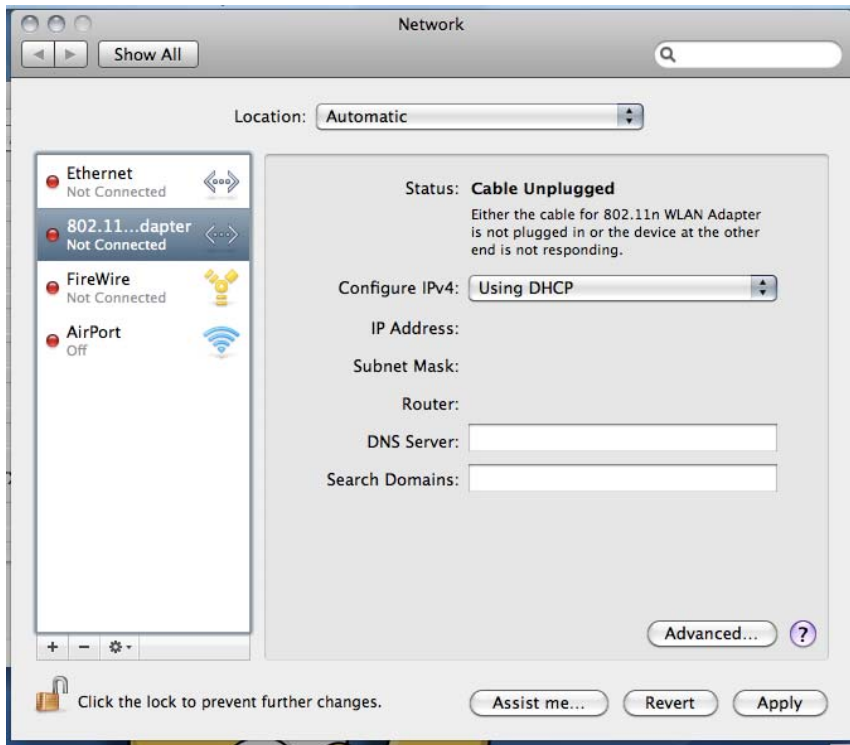


2. Once installed, Click Restart to restart your Mac.

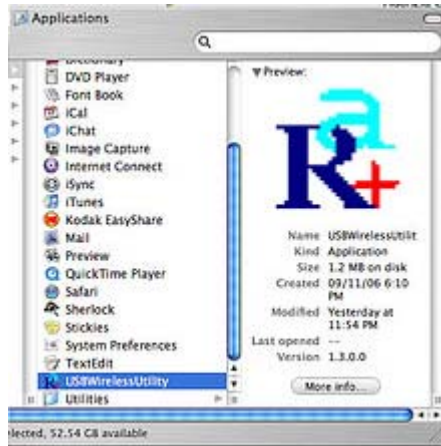
3. Insert your wireless USB adapter into a free USB slot. After restarted, you will see a screen telling about the new wireless adapter.



Click Network Preferences> it shows the Network screen, showing the adapter at the left hand menu and by default it's on Using DHCP. Click Apply and close the Network screen.

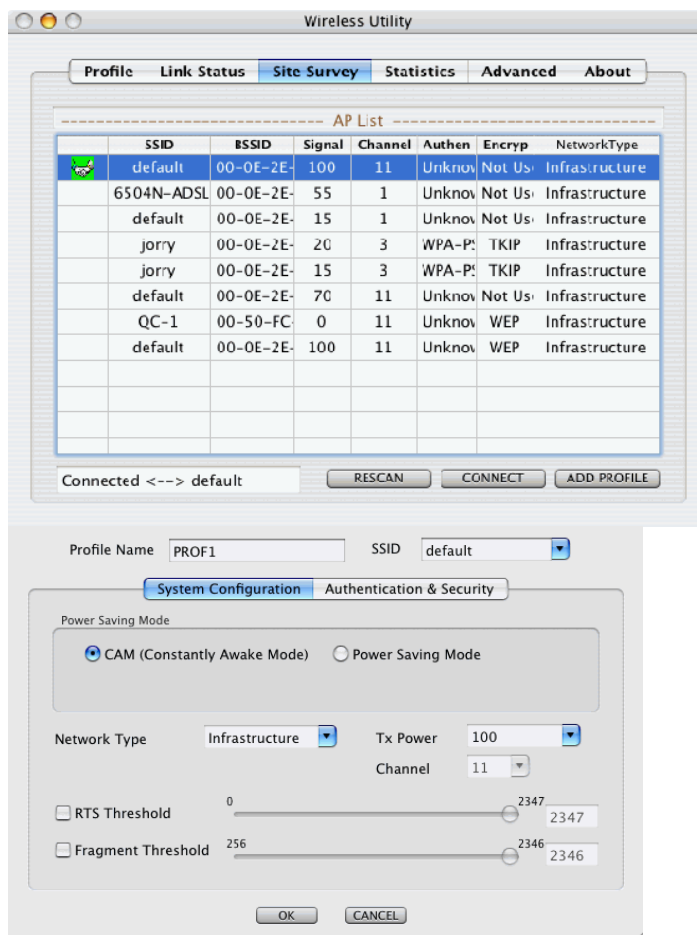


4. In the main Applications folder, you will see the "**USBWirelessUtility**". It shows the details information about the wireless USB adapter.

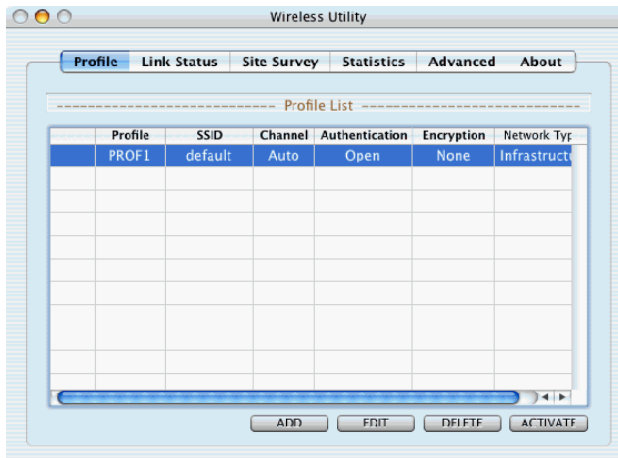


- Open the Wireless Utility > Available Network/Site Survey tab and select your wireless router and click "ADD PROFILE". (It'll ask you to enter details accordingly. If you have security like WEP/WPA turned on, put that information in or you won't be able to connect.)

Below is an example:



Select 'Authentication & Security' and enter your WEP/WPA key.



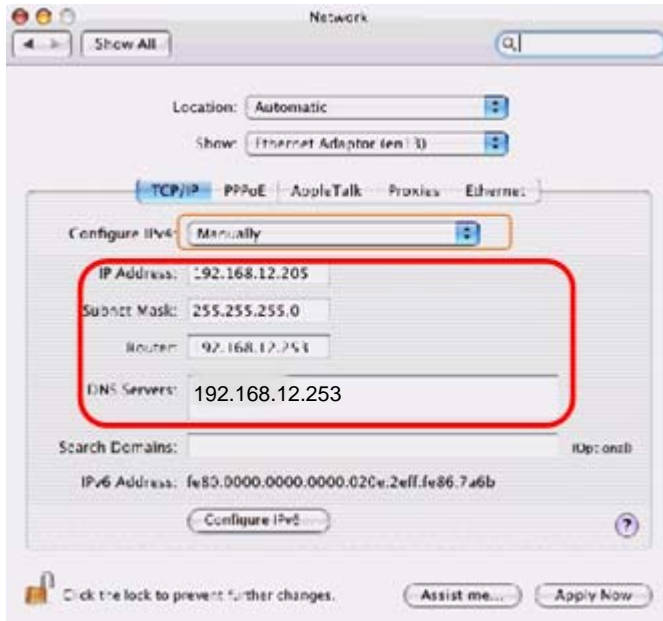
PROF1 will appear in the Profile tab, select PROF1 and click "ACTIVATE". You will see a green tick showing it's connected.

NOTE: A red tick is showing it's not connected. In this case, you may have entered incorrect WEP/WPA key.

B) Can't Connect to your Wireless Network

If you have done the above Step 1-5 and you can confirm you are using the right security key but still not connected to the Internet. Please do the following:

6. Go to System Preferences>Network> Under the "TCP/IP" tab, "Configure IPv4", use "Manually".

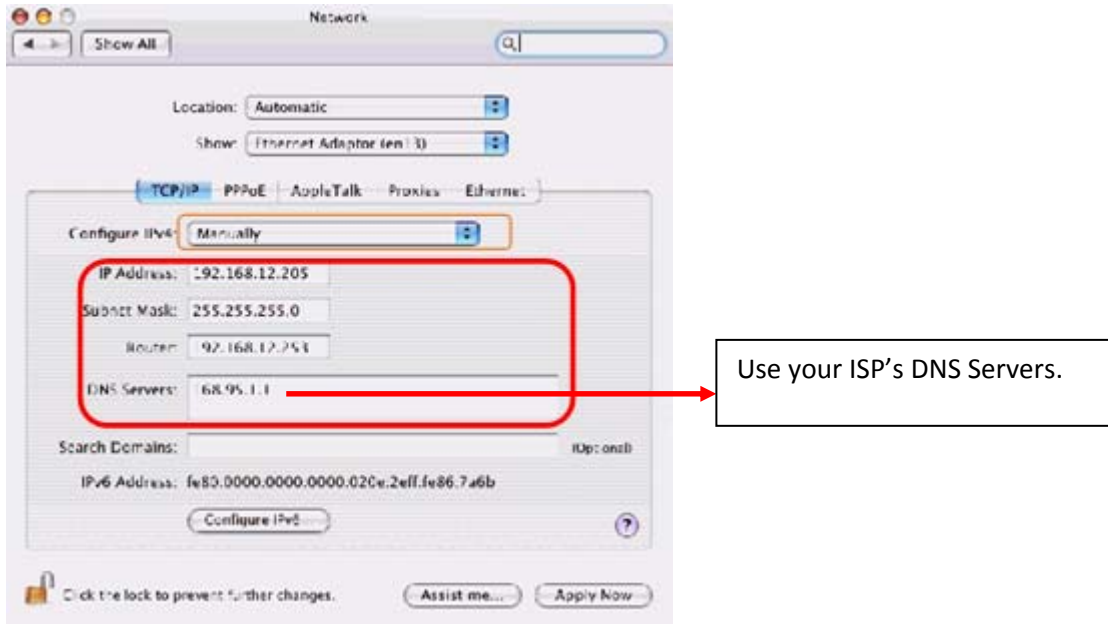


7. Enter your IP Address, Subnet Mask, Router and DNS Server manually.
 - The above example is based on router IP Address 192.168.12.253. Your route's IP Address will be different. Please use your own IP's range and your router's IP Address.
 - DNS Servers is the same as your router's IP Address.
 - Click "Apply Now" to save the setting.
8. After wait for few seconds, you should see that you're connected. You can now access to the Internet. If you are still unable to open webpage, please go to Step 9.

C) Can't Connect to your Wireless Network

9. In this case, you need to use the DNS Servers provided by your ISP. If you don't have the DNS Servers address, please contact your ISP.

Then, enter the DNS Servers into the TCP/IP setting as follows:



10. After wait for few seconds, you should see that you're connected. You can now access to the Internet.